

EASY PIPE FIXIT

Get rid of those ugly dents!!

Dented pipes are a major hassle. Besides the fact that they rob valuable horsepower, usually one's only recourse is to buy a new one. This is another problem; pipes aren't cheap. In fact, they're extremely expensive.

The dents are mainly found in the low-hanging header pipe of the expansion chamber. Caused from rocks, crashes or whatever, they can be fixed.

First, remove the pipe. Next, you're going to cut the pipe into two sections. This cut will be in the heart of the dent, so before the cut is made, scribe some lines in the pipe, in order that it can be lined up afterwards, and rewelded.

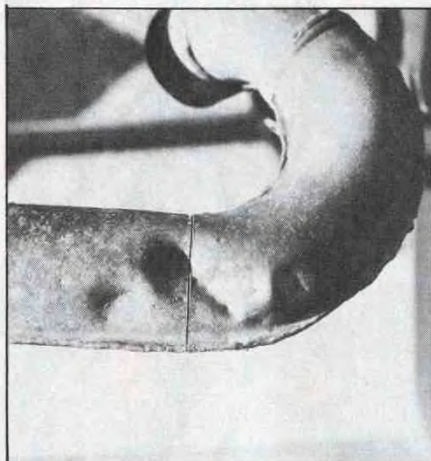
Once the pipe is cut, mount in a vise. Now you'll need something to pry the dent out with. Try to use something round and as close as possible in shape to the inside diameter of the pipe. Carefully push the dent out. It won't be perfect, so don't expect it to be. Do this on both pipe pieces.

Next, using a small ball-peen hammer, pound and reshape edges of the pipe. Take your time and keep working the dent out until it looks fairly decent.

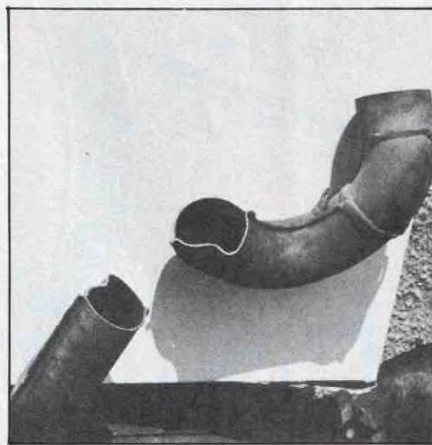
If you have a welder, the next step is simple. Line up the original scribe marks and tack the pipe together. Once it's spot-welded (only two or three small welds are needed) reinstall it on the bike, to insure that it still fits. Now that you're positive everything was done correctly, weld the entire pipe back together.

For those who have no welding outfit, take it down to the local welding shop. Make sure they understand the markings on the pipe and have them weld it together.

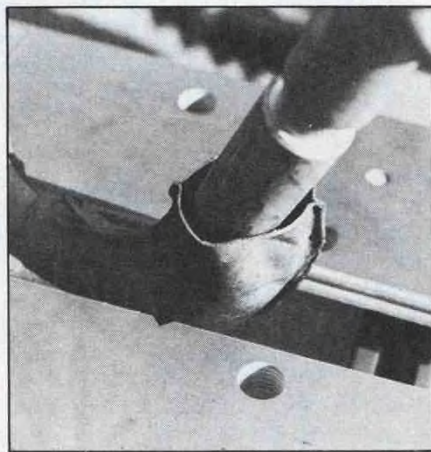
One last thing, just a little preventative medicine. Weld a section of angle iron onto the front of the header pipe. This works as a sort of bash plate for the pipe (see photo) and may help keep your pipe in good shape the next time it comes in contact with nasty rocks. □



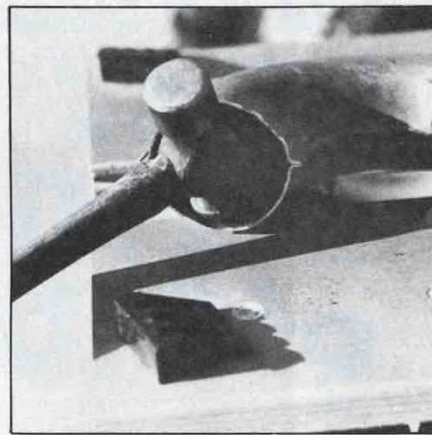
1. Make a cut directly in the center of the dent.



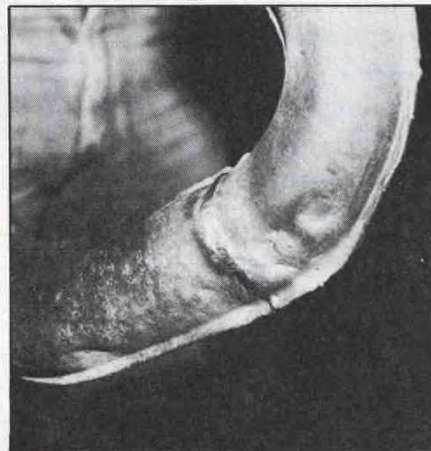
2. Be sure to have the pipe marked in some way so you can line it up when rewelding.



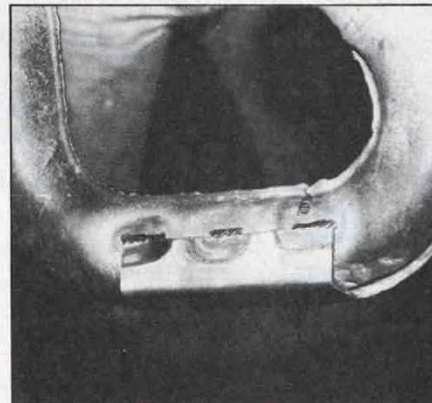
3. Chuck the pipe in a vise, then carefully pop the dents out.



4. With a small ball-peen hammer, shape the ends of the pipe back into its original shape.



5. Once it's welded together it won't look flawless, but it'll still be functional.



6. You can make a simple skid plate for your pipe with an angle iron. Just cut a 4- to 5-inch section of iron, then weld it to the pipe.